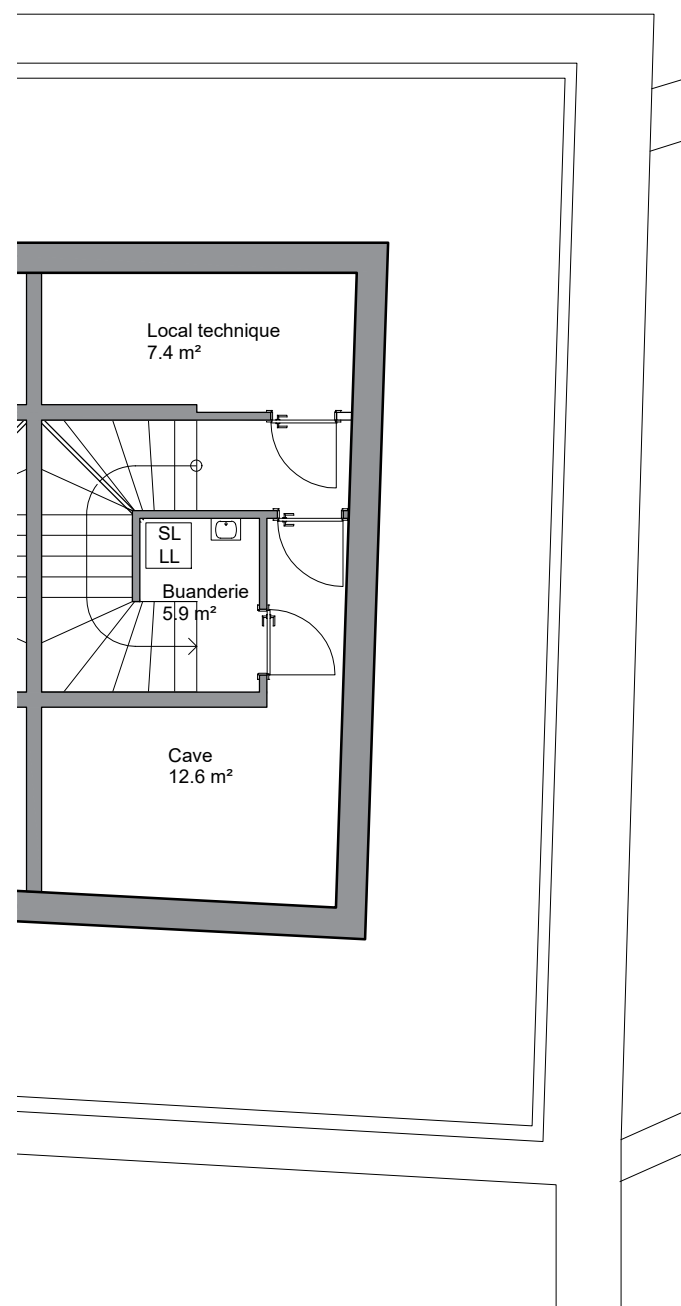
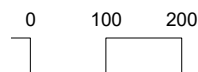
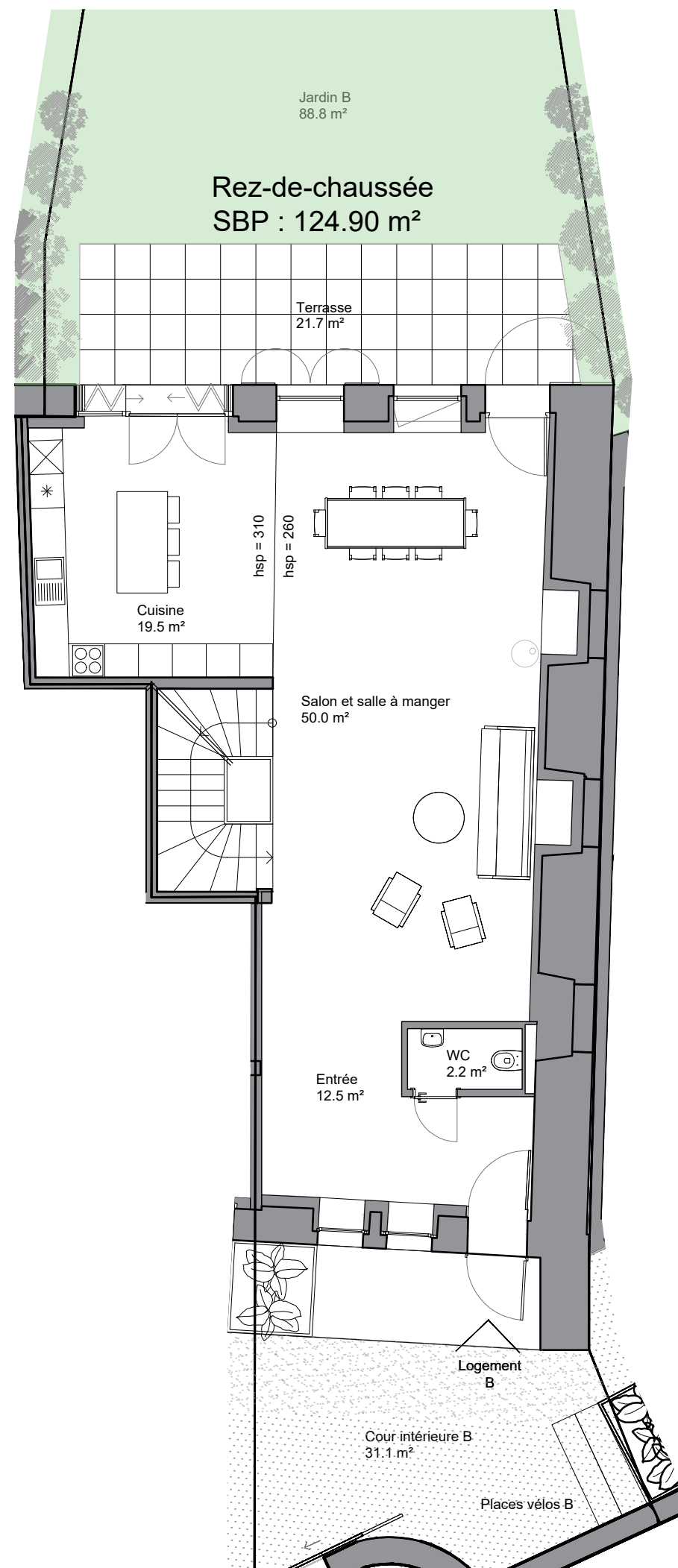


Nombre de pièces 7  
 Surface de la parcelle 278.5 m<sup>2</sup>  
 Surface de la villa 353.20 m<sup>2</sup>  
 Surface extérieure 156.60 m<sup>2</sup>

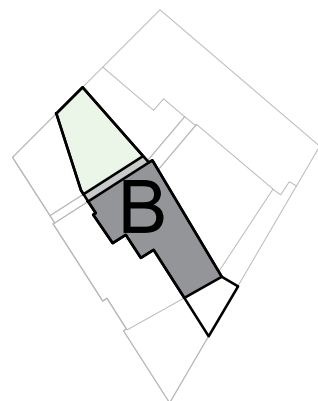
**Sous-sol**  
 SBP : 41.20 m<sup>2</sup>



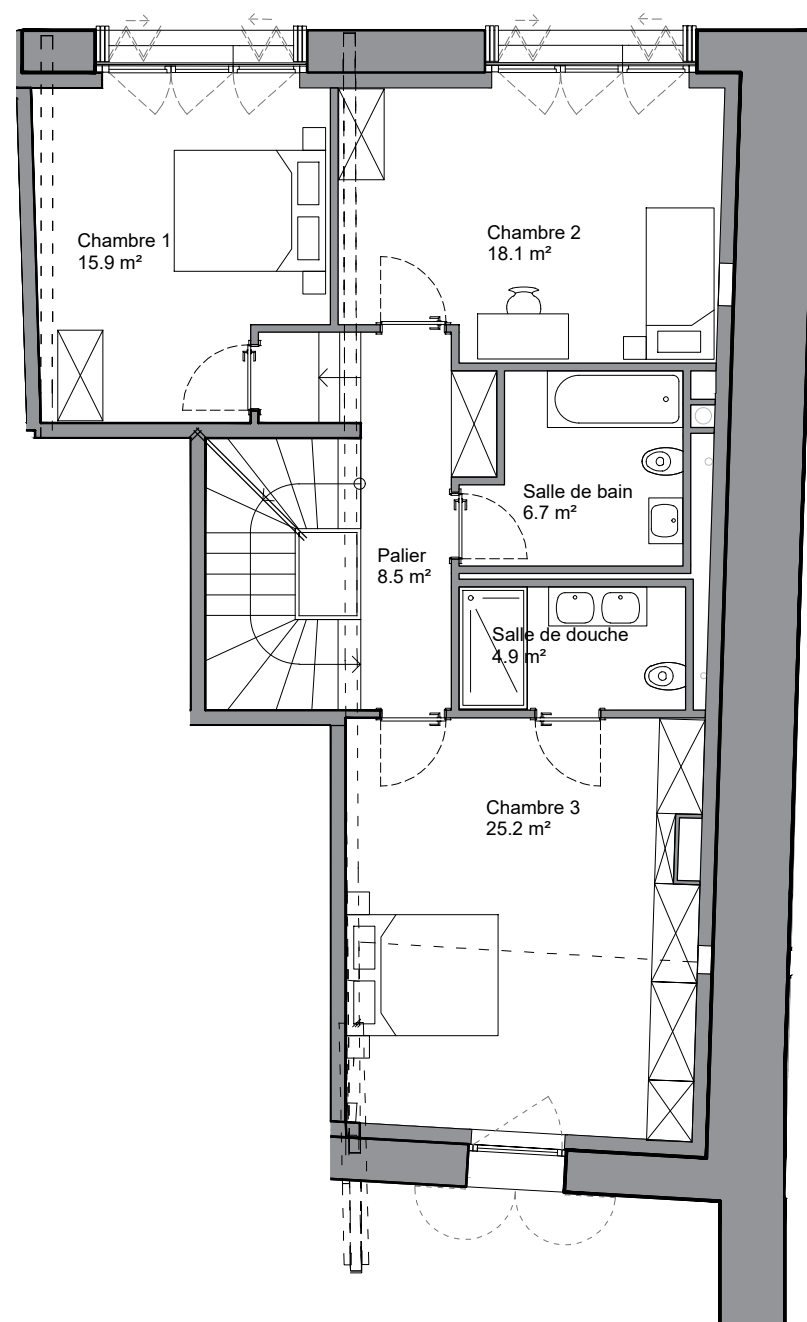
**Rez-de-chaussée**  
 SBP : 124.90 m<sup>2</sup>



Nombre de pièces 7  
 Surface de la parcelle 278.5 m<sup>2</sup>  
 Surface de la villa 353.20 m<sup>2</sup>  
 Surface extérieure 156.60 m<sup>2</sup>



**Étage**  
SBP : 124.20 m<sup>2</sup>



**Combles**  
SBP : 63.60 m<sup>2</sup>

