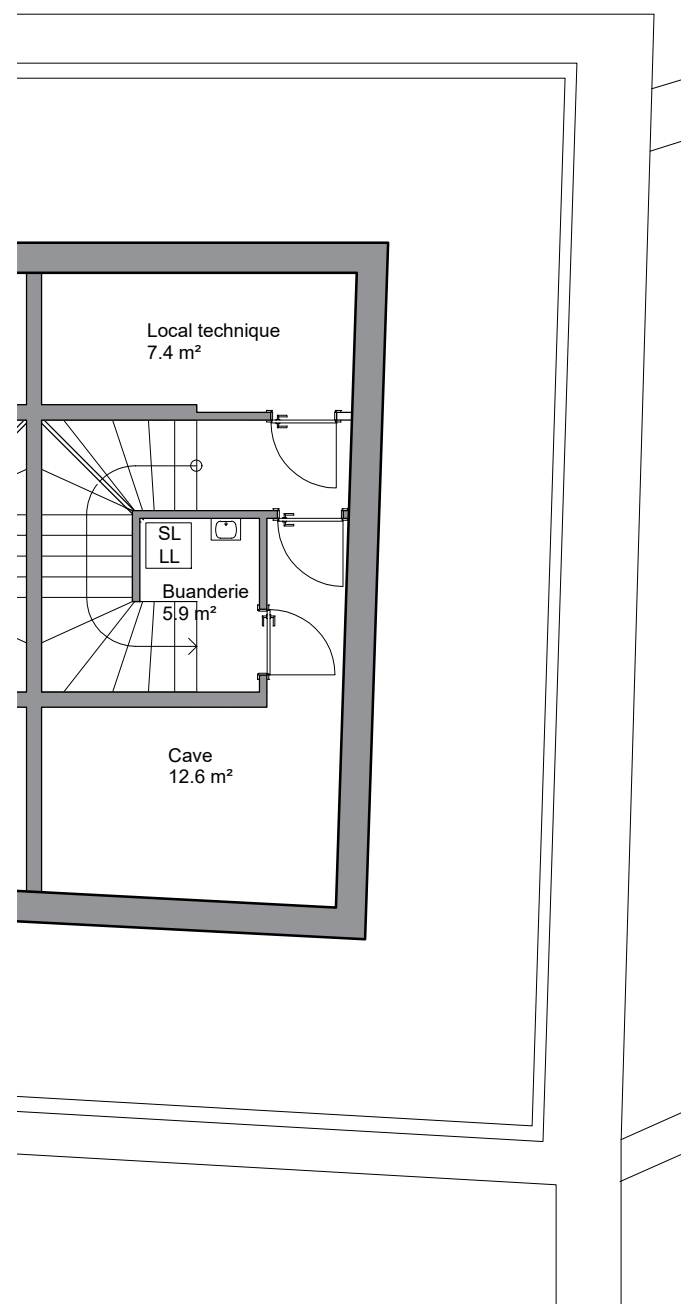
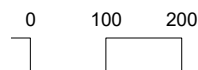
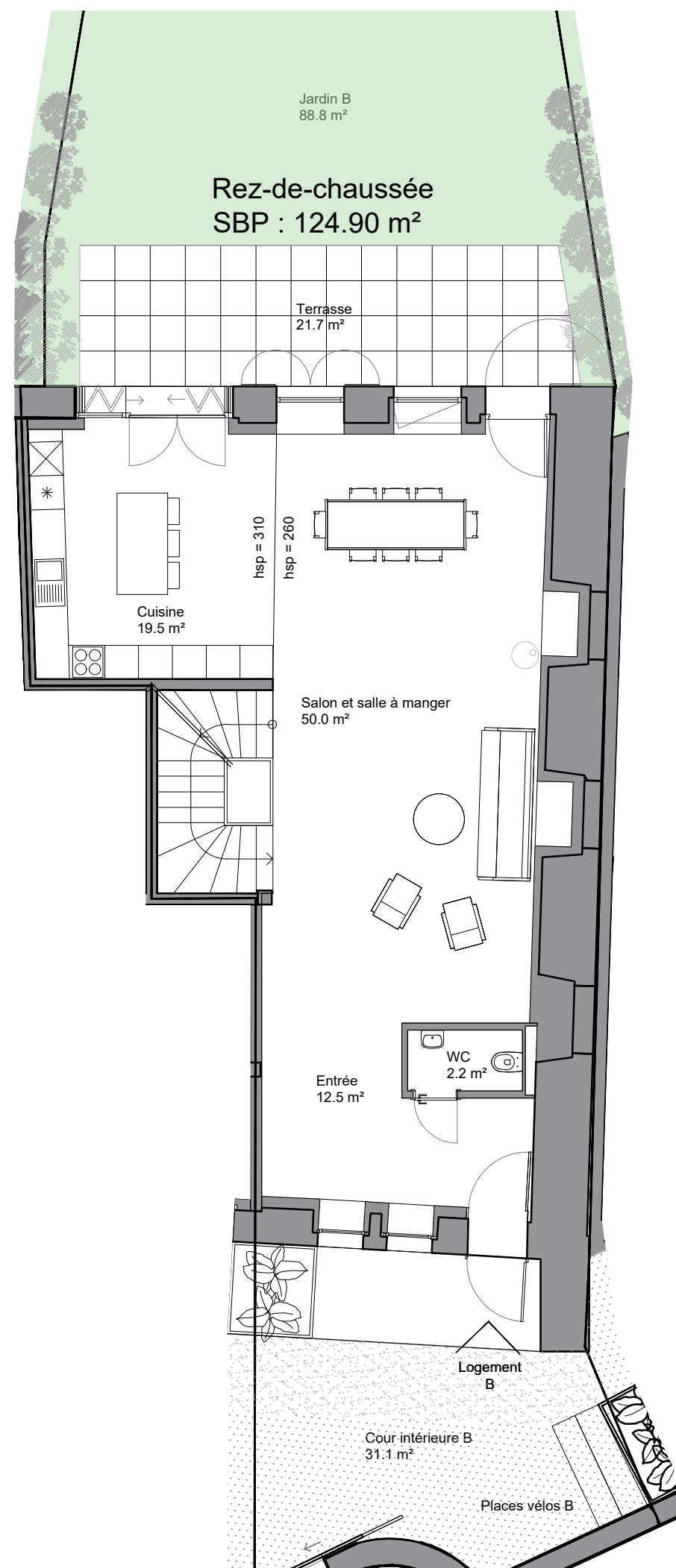


Nombre de pièces 7
 Surface de la parcelle 283 m²
 Surface de la villa 353.20 m²
 Surface extérieure 158 m²

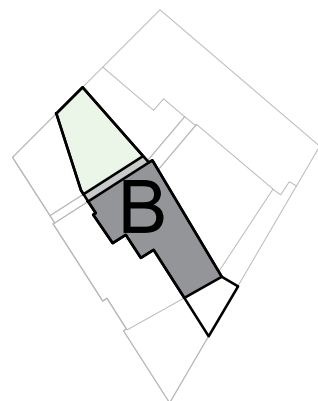
Sous-sol
 SBP : 41.20 m²



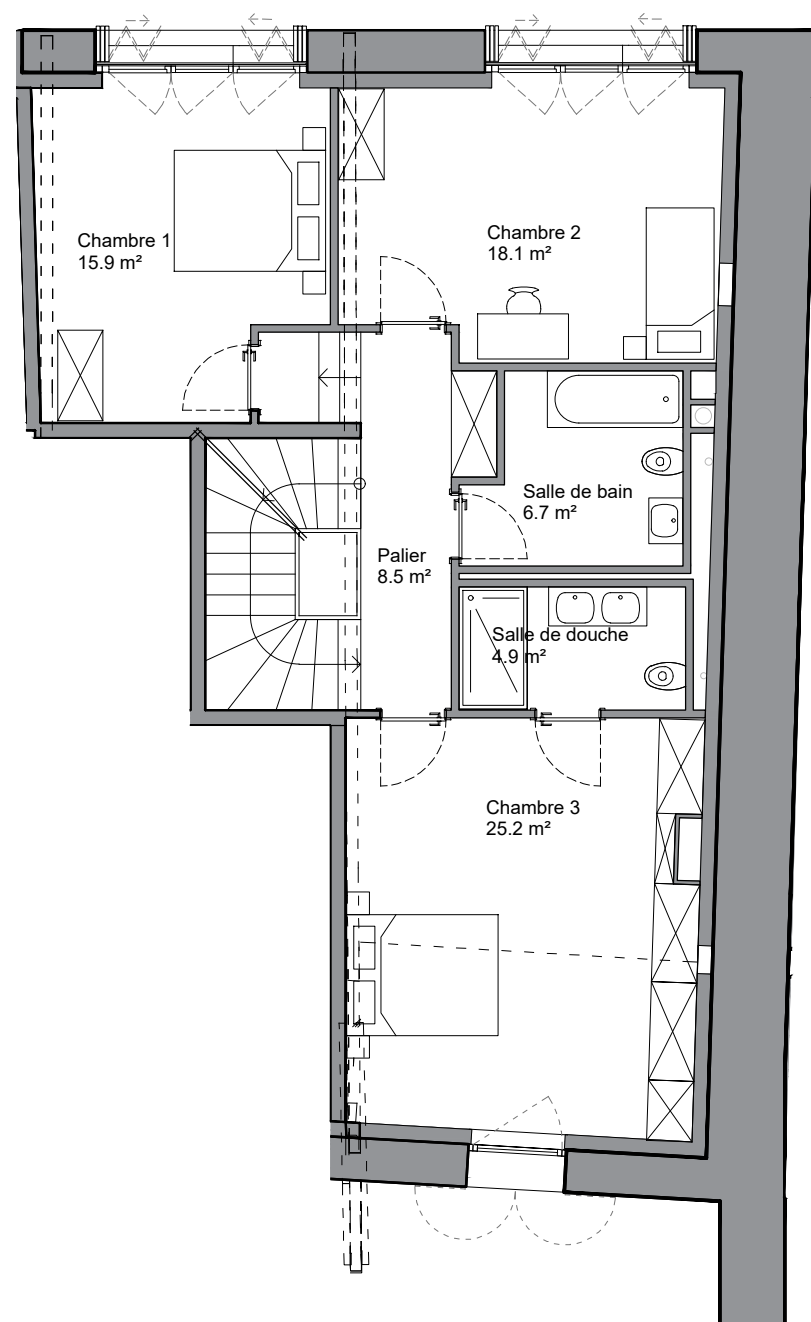
Rez-de-chaussée
 SBP : 124.90 m²



Nombre de pièces 7
 Surface de la parcelle 283 m²
 Surface de la villa 353.20 m²
 Surface extérieure 158 m²



Étage
SBP : 124.20 m²



Combles
SBP : 63.60 m²

